

# TCF1/3-CL-SS-DL-DR-DR

■ 1/1 GN Counter Freezer, 3 Section



Dimensions		Build		Technical	
External Width (mm)	1865	Door Description	3 Solid Swing Doors	Temperature Holding	-23°C
External Depth (mm)	700	Door Opening	Left Door opens left, Centre Door opens right, Right Door opens right. Configurable and Field Reversible (opposite hinge part sold separate)	Refrigerant	R290
External Height (mm)	900			Voltage / Frequency / Phase	220-240V/50Hz/1
Exclusions	Depth does not include 41mm for door handles.			Amps	0.7
Net Volume (Litres)	249	Exterior Construction	Stainless steel front & countertop, aluminium sides & rear	Wattage	161
Gross Volume (Litres)	630	Interior Construction	Clear coated aluminium, stainless steel base	Climate Class	5
Supplied Shelves	6			Operating Statement	Heavy Duty: This appliance is intended for use in ambient temperatures up to 40°C.
Shelf Size (L x D mm)	530 x 325	Air Intake Position	Front	Testing Standard	EN 16825
Internal Net Height (mm)	500	Ventilation Position	Front	EEC	C
Unpackaged Weight (kg)	182	Clearance Required	Zero back and sides	EI	42.7
Packaged Weight (kg)	193	Cord Length (Meters)	2.74	kWh/24hr	4.49
Packaged Dimensions (W x D x H mm)	2032 x 801 x 1069	Standard w/ Locks	standard	kWh/Annum	1639
Supplied with	ø 127 mm castors (152 mm height). Plinth mountable			Defrost Type	Auto



Specifications subject to change without notice.  
Chart dimensions rounded up to the next whole millimeter (inches rounded up to the 1/8")

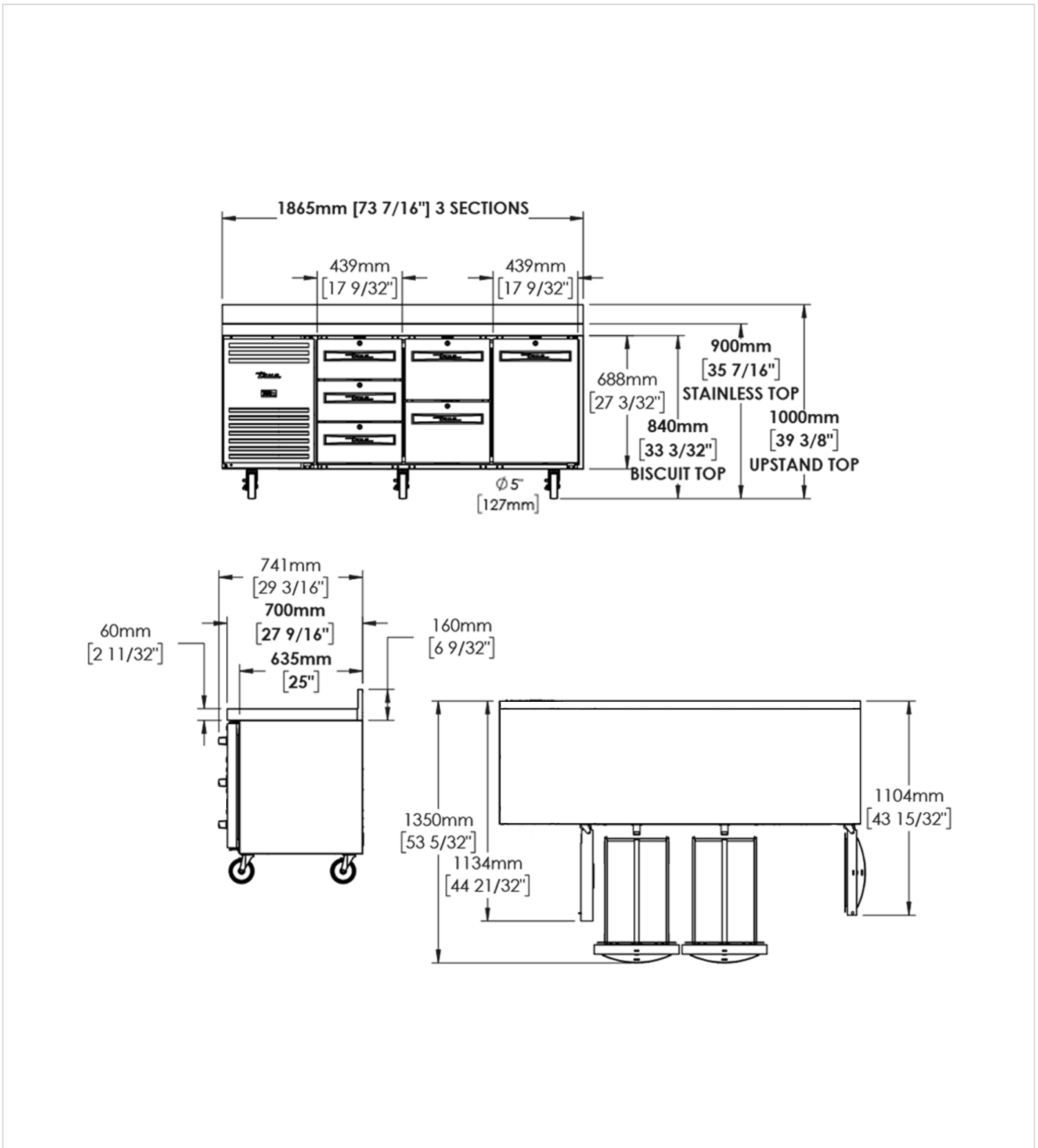
UK & Ireland [0800 783 2049](tel:08007832049)  
EMEA [+41 61 563 07 05](tel:+41615630705)  
Australia [+61 2 9619 9999](tel:+61296199999)

[TFIUK@truemfg.com](mailto:TFIUK@truemfg.com)  
[TrueCHCustomerService@truemfg.com](mailto:TrueCHCustomerService@truemfg.com)  
[TrueRefAus@truemfg.com](mailto:TrueRefAus@truemfg.com)



# TCF1/3-CL-SS-DL-DR-DR

■ 1/1 GN Counter Freezer, 3 Section



Specifications subject to change without notice.  
Chart dimensions rounded up to the next whole millimeter (inches rounded up to the 1/8")

UK & Ireland 0800 783 2049  
EMEA +41 61 563 07 05  
Australia +61 2 9619 9999

TFIUK@truemfg.com  
TrueCHCustomerService@truemfg.com  
TrueRefAus@truemfg.com

